



**The Cruising Yacht Club of Western Australia
68th Cockburn Sound Regatta**



The 68th Cockburn Sound Regatta

27th - 30th December 2025

Sailing Instructions

**The Organising Authority (OA) is
The Cruising Yacht Club of WA Inc.**

Proudly Supported by our Major Partners





Sailing Instructions

1. Rules

- 1.1. The regatta will be governed by the rules as defined in:
 - (a) The Racing Rules of Sailing (RRS)
 - (b) The Prescriptions and Special Regulations of Australian Sailing will apply
 - (c) The Passage races are classed as Category 6, as defined in Section 2 of the Australian Sailing Special Regulations Part 1
 - (d) The Around the Buoys races are classed as Category 7, as defined in Section 2 of the Australian Sailing Special Regulations Part 1
 - (e) The IRC rules, Parts 1, 2 and 3.
 - (f) The Australian Sports Boat Association rules (ASBA).
 - (g) The Class Rules of individual classes of boats shall apply.
 - (h) Appendix T – Arbitration shall apply.
 - (i) Supplementary Sailing Instructions (SSI) may be issued for classes holding State or National Championships

- 1.2. The following racing rules (RRS) are modified in accordance with RRS 86 as follows:
 - (a) RRS 77, Identification on Sails. A boat without identification numbers on the mainsail may be required to display bow numbers on each side of the bow no more than one metre from the bow for the duration of the event. If required numbers will be available at registration.
 - (b) RRS 44.1- Taking a Penalty - is changed for all Divisions so that the Two-Turns penalty is replaced by the One-Turn penalty.
 - (c) RRS 49, Crew Position; Lifelines, RRS 55 Setting and Sheeting Sails and RRS 51 Movable Ballast, will apply except that:
 - (i) Boats complying in all respect with the requirements of their particular class rules may race wholly within the rules of that class unless otherwise prescribed in the Sailing Instructions, and
 - (ii) Boats not racing to class rules, but whose design incorporates fixed or retractable bow sprit, outriggers, trapezes or equipment to move water as ballast, may use such devices and features.

2. Notices to Competitors

- 2.1. Notices to competitors will be posted on the official notice board located on the ground floor of the TCYC clubhouse.

3. Changes to Sailing Instructions

Any change to the Sailing Instructions will be posted not less than two hours before the first race it will affect, except that any change to the Schedule of Races will be posted by 1830 on the day before it will take effect.



The Cruising Yacht Club of Western Australia
68th Cockburn Sound Regatta



4. Signals Made Ashore

- 4.1. Signals made ashore will be displayed on the flag mast in front of the TCYC clubhouse.
- 4.2. A signal displayed over a Division flag, means it applies to that Division only.
- 4.3. When flag AP is displayed ashore, '1 minute' is replaced with 'not less than 60 minutes' in the race signal AP.
- 4.4. When flag Y is displayed ashore, RRS 40 applies at all times while boats are afloat.

5. Schedule of Races

- 5.1. **Attachment A** – The Schedule of Races details the first warning signal, divisions, and the course type.
- 5.2. One extra race per day may be sailed, provided that no division becomes more than one race ahead of schedule and the change is made according to SI 3.
- 5.3. After a long postponement, to alert boats that a race will begin soon, a sound signal will be made, and an orange flag will be displayed for at least five minutes before a warning signal is displayed.
- 5.4. On the last day of the regatta (30th December) no warning signal shall be made after 1200.

6. Division/Warning Signal Flags

- 6.1. For the purpose of these SI and RRS 26, "Division" will be used in the place of "Class".
- 6.2. The flags for each Division/Warning signal will be designated at Registration.
- 6.3. Division flags
 - (a) Division flags will be provided by the organising authority at registration.
- 6.4. **[NP] [DP]** - Division flags shall be prominently displayed whilst racing and shall be removed if the boat retires. A boat not displaying the required flag shall not be recognised.

7. Racing Areas

- 7.1. **Attachment C** - Racing Areas, shows the location of the racing areas.

8. The Courses

- 8.1. **Attachment A** - Schedule of Races and Course Type.
- 8.2. **Attachment B** The RC (Race Committee) Boat will display the course flag no later than the warning signal.
- 8.3. **Attachment B** The tables show the courses, including the order in which marks are to be passed and the side on which each mark is to be left.



ROCKINGHAM



9. Marks

9.1. Description of Marks

Day Buoy (DB)	Yellow large inflatable buoy which may have a sponsor's banner attached.
Windward/Leeward	Orange inflatable buoys
Change of course mark	Orange inflatable buoy with a black band

9.2. **[NP] Attachment D** – Mark Coordinates, shows approximate mark coordinates.

9.3. The starting marks will be a RC Boat at the starboard end and a pin end orange mark or a boat with an orange flag at the port end.

10. Areas that are Obstructions, Exclusion zones or are Prohibited,

10.1. All the waters bounded by lines commencing on the foreshore at the southern end of the bandstand at the foot of Railway Terrace (approx. 32°16.512'S, 115°43.677'E) then extending in line to (approx. 32°16.409's, 115°43.635'E); then approx. 470 meters north easterly along a line parallel to and 200 meters from the foreshore to 32°16.280's, 115°43.891 'E; then south easterly to the foreshore (approx. 32°16.367'S, 115°43.956'E).

See **Attachment E** - Finish Line Obstructions / Prohibited Areas.

10.2. **[NP] [SP]** - Boats entering the obstruction, exclusion zones shall incur a two point penalty [SP] without a hearing.

11. The Start

11.1. Races will be started by using RRS 26.

11.2. **[NP] [SP]** Boats intending to start shall sign on prior to their warning signal. Any boat failing to comply shall incur a two-point penalty [SP] without a hearing but will not be scored worse than DNS. Signing on will be completed by:

(a) **Keelboats & Multihulls (excluding OTB Multihulls)** Making radio contact with the TCYC Radio Tower, giving their sail number and number of persons on board (POB), and ensuring that they receive acknowledgement from the TCYC Radio Tower.

(b) **OTB Multihulls** shall sign on at the RC Boat ensuring they comply with SI 11.4

11.3. To alert boats that a race or sequence of races will begin soon, the orange starting line flag will be displayed with one sound at least five minutes before a warning signal is made.

11.4. **[NP] [SP]** - Boats whose warning signal has not been made shall avoid the starting area during the starting sequence of other races. Any boat failing to comply shall incur a two-point penalty [SP] without a hearing.

11.5. **[NP] [SP]** - Boats which have started and then sail through a start line in either direction during the start sequence for other races shall incur a two-point penalty [SP] without a hearing.

11.6. The starting line will be between a mast or staff displaying an orange flag on the Race Committee (RC) Boat at the starboard end and an orange mark or a staff displaying an orange flag on a boat at the port end.

11.7. A boat that does not start within 5 minutes after her starting signal will be scored "Did Not Start" (DNS) without a hearing. This changes RRS A5.




The Cruising Yacht Club of Western Australia
68th Cockburn Sound Regatta



- 11.8. [NP] - Divisions will start approximately at the time and in the sequence detailed in **Attachment A** - Schedule of Races. Divisions may be combined, or the starting order changed by the RC and this will be indicated by the division flags displayed.
- 11.9. **General recalls** - When a general recall is signalled, the signal will be displayed for four minutes only. The warning signal for the first recalled Division will be the starting signal for the last Division in the original sequence followed by any succeeding recalled Divisions. This changes RRS 29.2.
- 11.10. A buoy may be attached to the stern of the RC boat and is deemed to be part of the RC boat and therefore part of the starting mark. Boats shall not pass between this buoy and the RC boat at any time.
- 11.11. **Day Buoy** - Where a Day Buoy is listed in the course, it will be a buoy situated to windward of the Start Line. Prior to the warning signal, the RC boat will display a red or green flag.
- A red flag means the mark is to be left to Port.
 - A green flag means the mark is to be left to Starboard.

12. Change of the Next Leg of the Course

To change the next leg of the course, the RC will display 'C'  and lay a new mark (or move the finishing line) to a new position. The original mark will be removed as soon as practicable. When in a subsequent change the new mark is replaced, it will be replaced by the original mark. The new mark shall be an Orange inflatable buoy with a black band.

13. The Finish

- 13.1. A buoy may be attached to the stern of the RC boat and is deemed to be part of the RC boat and therefore part of the finishing mark. Boats shall not pass between this buoy and the RC boat at any time.
- 13.2. **Windward/Leeward** finishing line will be a mast on a committee boat displaying an orange flag and a finishing mark. When the committee boat is in a finishing sequence it shall display a blue finishing flag.
- 13.3. **Around the Buoys and Passage Races** finishing line will be an imaginary line between a black and yellow chequered spar buoy with a blue flag off the end of the Val Street jetty and a scribed point within the TCYC finishing box. See **Attachment C** - Racing Areas.
- 13.4. [NP][SP] - Except when finishing, boats sailing through a finish line in either direction, shall incur a two-point penalty [SP] without a hearing.





14. Penalty System

- 14.1 RRS 44.1 – Taking a Penalty - will be changed for all Divisions, so that the two-turns penalty is replaced by the one-turn penalty.
- 14.2. Appendix T – Arbitration shall apply.
- 14.3. The notation “DP” in a rule in the SI means that the penalty for a breach of that rule may, at the discretion of the protest committee, be less than disqualification.
- 14.4. Breaches marked with “NP” will not be grounds for a protest by a boat. This changes RRS 60.1(a).
- 14.5 For some specific breaches of the rules, the RC may apply a standard penalty “SP” without a hearing. The RC may still protest a boat when they consider the SP to be inappropriate. A boat may request redress if it believes the application of the standard penalty to be improper. This changes RRS 63.1 and A5.

15. Time Limit

- 15.1. The target times and time limits for all Divisions are as follows:

Course:	Target:	Time Limit: (after 3 rd finisher)
Passage	2 hours	60 minutes
Around the Buoys	2 hours	60 minutes
Windward / Leeward	40 minutes	15 minutes

- 15.2. Boats failing to finish within the time limit after the **third** boat in the division sails the course and finishes, will be scored “Did Not Finish” (DNF) without a hearing. This changes RRS 35 and A5.

16. Protests and Requests for Redress

- 16.1. Protest forms are available at the race office located in the TCYC clubhouse.
- 16.2. Protests and requests for redress or reopening shall be delivered there within the appropriate time limit.
- 16.3. For each division, the protest time limit is one hour after the last boat has finished the last race of the day or the RC signals no more racing today, whichever is later.
- 16.4. Notices will be posted no later than 30 minutes after the protest time limit to inform competitors of hearings in which they are a party to or named as witnesses.
- 16.5. Hearings will be held in the protest room.
- 16.6. In addition to the requirements of RRS 61.1(a), a boat intending to protest shall, in addition to hailing “protest” and displaying a red flag at the time of the incident, inform the other boat as soon as reasonably possible on returning ashore, and if reasonably possible, bring a representative of the other boat to the arbitration hearing. This changes RRS 61.1(a).



**The Cruising Yacht Club of Western Australia
68th Cockburn Sound Regatta**



17. CSR Scoring and Handicaps

Division:	Remarks:	Handicap:
TCYC Race	FSC to TCYC CSR Feeder race 26 th December.	PBH
Division 1	Sailing Short Passage, Around the Buoys and Windward/Leeward Races	PBH & IRC
Division 2	Yachts with a length overall greater than or equal to 8 metres, or at the Race Committee's discretion. Sailing Short Passage, Around the Buoys and Windward/Leeward Races	PBH & IRC
Division 3	Yachts with a length overall less than 8 metres, or at the Race Committee's discretion. Sailing Short Passage, Around the Buoys and Windward/Leeward Races	PBH
Jib & Main (JAM) (1,2&3)	Yachts that will not fly a spinnaker at any time during the Regatta. Sailing Short Passage and Around the Buoys Races	PBH & IRC
Sports Boat	All Sports boats. Sailing Around the Buoys and Windward/Leeward Races	PBH & CBH
Super 30s	Planing keel sailing Short Passage, Around the Buoys and Windward/leeward	PBH & IRC
Multihull	Catamarans or Trimarans which are not considered to be 'Off the Beach Cats. Sailing Short Passage and Around the Buoys Races.	PBH

- 17.1. The Low Points scoring system of RRS Appendix A will apply.
- 17.2. Three (3) races are required to be completed to constitute a series.
- 17.3. When fewer than five races have been completed, a boat's series score will be the total of her race scores.
- 17.4. When from five (5) to eight (8) races have been completed, a boat's series score will be the total of her race scores excluding her worst score.
- 17.5. When nine (9) or more races have been completed, a boat's series score will be the total of her race scores excluding her two worst scores.
- 17.6. The Cockburn Sound Regatta Overall Champion will be the boat with the lowest score calculated by dividing each boats PBH series score by the sum of the number of starters in each race. All races are to count for the purpose of this calculation.

18. Safety Regulations (NP)(DP)

- 18.1. A boat that retires from a race shall notify the RC as soon as possible.
- 18.2. A boat that withdraws from the regatta shall notify the RC as soon as possible.



The Cruising Yacht Club of Western Australia
68th Cockburn Sound Regatta



19. Radio Communication (NP)(DP)

- 19.1. Regatta radio communication to competitors on VHF 69
- 19.2. Ferry service will be conducted on VHF 71.
- 19.3. **[DP]** Except in an emergency a boat shall neither make radio transmissions while racing nor receive radio communications not available to all boats. This restriction also applies to mobile phones.
- 19.4. All boats that are able should maintain a listening watch on the above allocated frequency.

20. Event Advertising (NP)(DP)

Boats may be required to display advertising chosen and supplied by the organising authority.

21. Support Boats (NP)(DP)

Shall fly both the TCYC club burgee and the white and green flag.

22. CSR Trophies and Prizes

- 22.1. Pennants will be awarded for 1st, 2nd and 3rd places each day for each of a division's races for PBH Handicaps.
- 22.2. Pennants will be awarded for 1st place each day for each of a division's races for IRC and CBH Handicaps.
- 22.3. Trophies will be awarded to the overall regatta 1st, 2nd and 3rd places for each division for PBH Handicaps. 5 entries are required for a division to receive trophies.
- 22.4. Trophies will be awarded to the overall regatta 1st place in each division for IRC Handicaps. 5 IRC entries are required for a division to receive IRC trophies. This will also apply for Sports Boats for CBH Handicaps
- 22.5. A trophy will be awarded to the overall regatta champion.
- 22.6. The main regatta presentation will be held after lunch on the 30th December upon completion of the morning's racing.





**The Cruising Yacht Club of Western Australia
68th Cockburn Sound Regatta**



23. Disclaimer of Liability

Competitors participate in the regatta entirely at their own risk. See RRS 3 Decision to Race. The OA, its associates and appointees will not accept any liability for material damage or personal injury, or death sustained in conjunction with or prior to, during (including being moored) or after the regatta.

24. Insurance (NP)

Each participating boat shall be insured with valid third-party insurance with a minimum cover of \$10 million per incident or equivalent. By taking part in the regatta, owners are deemed to have made a declaration that they have such cover.

25. Commercial shipping

At all times competitors should take particular care in areas where commercial shipping operates, including (but not limited to):

- Entrance to Fremantle Harbour
- Northern Entrance to and within the Cockburn Sound Channel.
- Cockburn Sound from Southern end of Cockburn Sound Channel to TCYC mark Y.

[SP] If the Fremantle Port Authority or any statutory body lodges a formal complaint with the OA that a boat has failed to keep clear, the case will go to the Protest Committee, and they will be scored DSQ





The Cruising Yacht Club of Western Australia
68th Cockburn Sound Regatta



Attachment A - Schedule of Races

Saturday 27th December 2025 - AM Race

Warning Signal:	Course Area:	Division:	Course Type:	# Races
10:00		Division 1	Around the Buoys	1
On Completion		Division 2	Around the Buoys	1
On Completion		Jib and Main (1)	Around the Buoys	1
On Completion		Jib and Main (2)	Around the Buoys	1
On Completion		Jib and Main (3)	Around the Buoys	1
On Completion		OTB Multihull	Windward/Leeward	up to 2
On Completion		Division 3	Windward/Leeward	up to 2
On Completion		Sports Boats	Windward/Leeward	up to 2

Saturday 27th December 2025 - PM Race

Warning Signal:	Course Area:	Division:	Course Type:	# Races
14:30		Division 1	Around the Buoys	1
On Completion		Division 2	Around the Buoys	1
On Completion		Jib and Main (1)	Around the Buoys	1
On Completion		Jib and Main (2)	Around the Buoys	1
On Completion		Jib and Main (3)	Around the Buoys	1
On Completion		OTB Multihull	Windward/Leeward	Up to 3
On Completion		Division 3	Windward/Leeward	Up to 3
On Completion		Sports Boats	Windward/Leeward	Up to 3

Yacht Grot

FREMANTLE



The Cruising Yacht Club of Western Australia
68th Cockburn Sound Regatta



Sunday 28th December 2025 - Races
To be advised before 18 30 on Saturday 27th
AM race first warning 09:30
PM race first warning 14:00

Monday 29th December 2025 - Races
To be advised before 18 30 on Sunday 28th
AM race first warning 09:30
PM race first warning 14:00

Monday 29th December 2025 - AM Race

Warning Signal:	Course Area:	Division:	Course Type:	# Races
09:30		Division 1	Around the Buoys	1
On Completion		Division 2	Around the Buoys	1
On Completion		Jib and Main (1)	Around the Buoys	1
On Completion		Jib and Main (2)	Around the Buoys	1
On Completion		Jib and Main (3)	Around the Buoys	1
On Completion		Division 3	Around the Buoys	1
On Completion		Sports Boats	Around the Buoys	1
On Completion		OTB Multihull	Around the Buoys	1



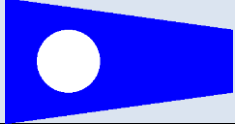





Attachment B - Courses

Passage Races				
Course:	Flag Name:	Flag:	Course: (all marks to Port unless stated otherwise)	Approx Distance:
1	NN.1		DB, M8, M1, M8, Q(Stbd), Finish.	11 NM
2	NN.2		DB, M8, M2(Stbd), M3(Stbd), M7(Stbd), Q(Stbd), Finish.	16 NM
3	NN.3		DB, M8, M2(Stbd), M3(Stbd), M7(Stbd), M2(Stbd), M7(Stbd) Q(Stbd), Finish.	19 NM
4	NN.4		DB, M8, M2(Stbd), M3(Stbd), M6(Stbd), Q(Stbd), Finish	19 NM
5	NN.5		DB, M8, M5(Stbd), M6(Stbd), Q(Stbd), Finish.	18 NM
6	NN.6		DB, M6(Stbd), M1, M8, M2(Stbd), M7(Stbd), Q(Stbd), Finish.	23 NM
7	NN.7		DB, M8, M5(Stbd), M6(Stbd), M2(Stbd, M3(Stbd), M7(Stbd) Q(Stbd), Finish	23 NM



Around the Buoys Races

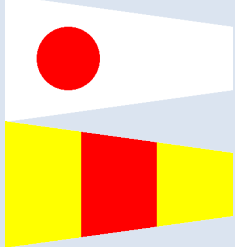
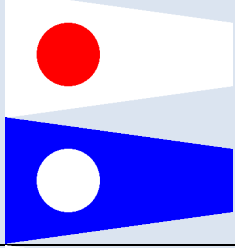
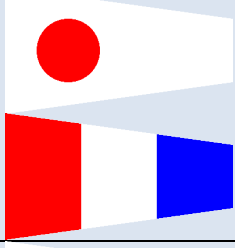
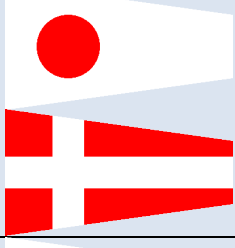
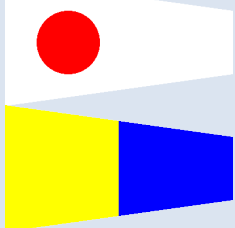
Around The Buoy Races				
Course :	Flag Name:	Flag:	Course: (all marks to Port unless stated otherwise)	Approx Dist:
1	Int.1		DB, J, B, I, B, Q (Stbd), Finish.	6 NM
2	Int.2		DB, J, B, I, B, I, J, B, Q (Stbd), Finish.	9 NM
3	Int.3		DB, J, B, I, B, I, J, B, I, J, B, Q (Stbd), Finish.	12 NM
4	Int.4		DB, H, I, B, I, B, Q (Stbd), Finish.	7 NM
5	Int.5		DB, H, I, B, I, B, H, I, B, Q (Stbd), Finish.	10 NM
6	Int.6		DB, H, I, B, I, B, H, I, B, H, I, B, Q (Stbd), Finish.	13 NM
7	Int.7		DB, B, H, E, H, Q (Stbd), Finish.	6 NM
8	Int.8		DB, B, H, E, H, E, B, H, Q (Stbd), Finish.	9 NM
9	Int.9		DB, B, H, E, H, E, B, H, E, B, H, Q (Stbd), Finish.	12 NM



The Cruising Yacht Club of Western Australia
68th Cockburn Sound Regatta



Around The Buoy Races

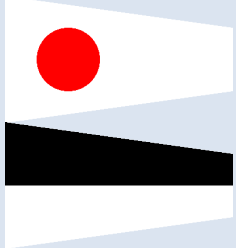
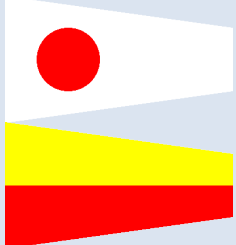
Course :	Flag Name:	Flag:	Course: (all marks to Port unless stated otherwise)	Approx Dist:
10	Int.10		DB, B, H, S, H, Q (Stbd), Finish.	6 NM
12	Int.12		DB, B, H, S, H, S, B, H, Q (Stbd), Finish.	9 NM
13	Int.13		DB, B, H, S, H, S, B, H, S, B, H, Q (Stbd), Finish.	12 NM
14	Int.14		DB, S, K (Stbd), E, B, I, S, E, B, Q (Stbd), Finish.	8 NM
15	Int.15		DB, S, K (Stbd), E, B, I, S, E, B, I, S, E, Q (Stbd), Finish.	10 NM



The Cruising Yacht Club of Western Australia
68th Cockburn Sound Regatta



Around The Buoy Races

Course :	Flag Name:	Flag:	Course: (all marks to Port unless stated otherwise)	Approx Dist:
16	Int.16		DB, B, X, S, D, H, S, E, K, Q (Stbd), Finish.	8 NM
17	Int.16		DB, B, X, S, H, S, D, H, S, E, K, Q (Stbd), Finish.	10 NM

The Day Buoy (DB) will be approximately 0.25 to 0.75 NM to windward of the start line.

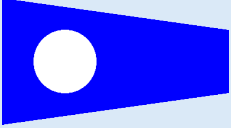
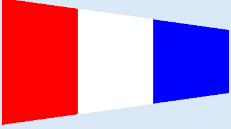




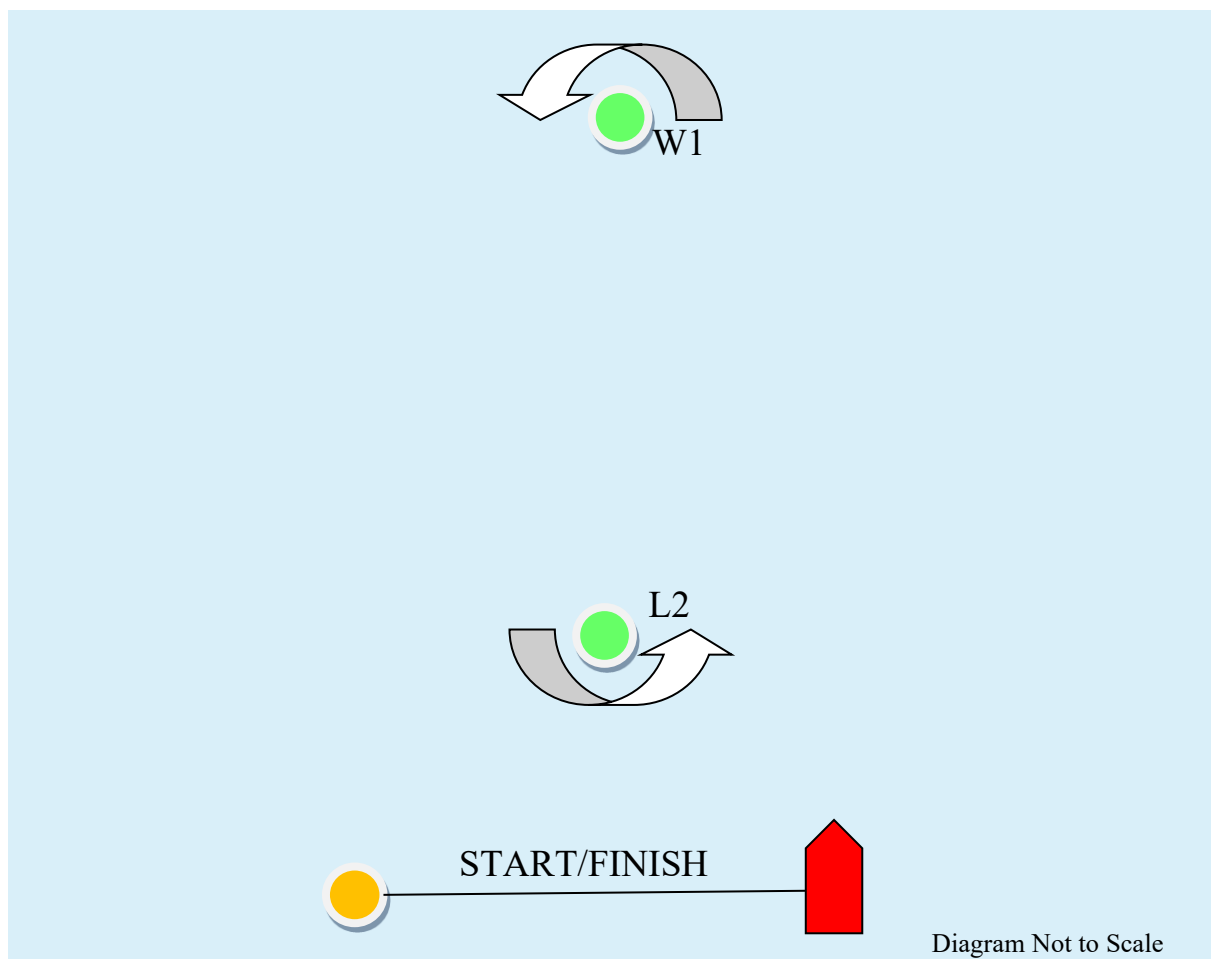
The Cruising Yacht Club of Western Australia
68th Cockburn Sound Regatta



Windward/Leeward Races

Course:	Flag Name:	Course Flag:	Course: (W1 & L2 to Port)
2	Int.2		W1, L2, W1, Finish.
3	Int.3		W1, L2, W1, L2, W1, Finish.

Mark W1 will be approximately 0.6 to 1.5 NM to windward of the start/finish line.
Mark L2 will be approximately 100m to windward of the start/finish line.



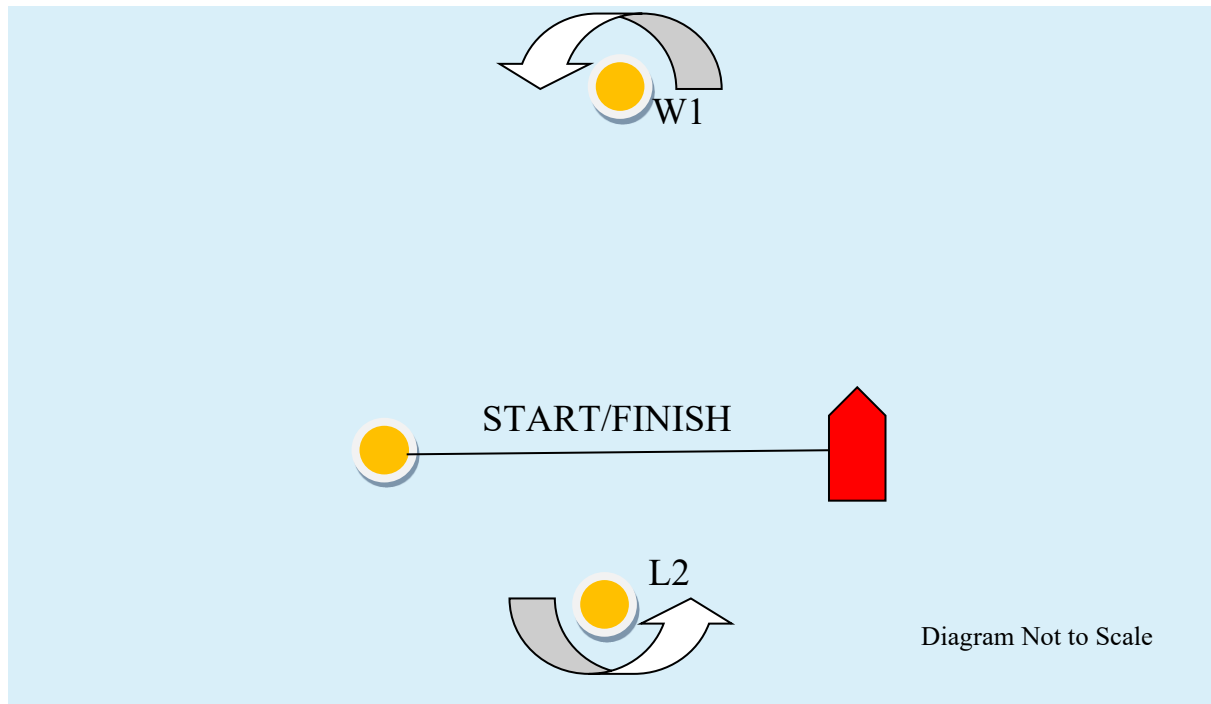


The Cruising Yacht Club of Western Australia
68th Cockburn Sound Regatta



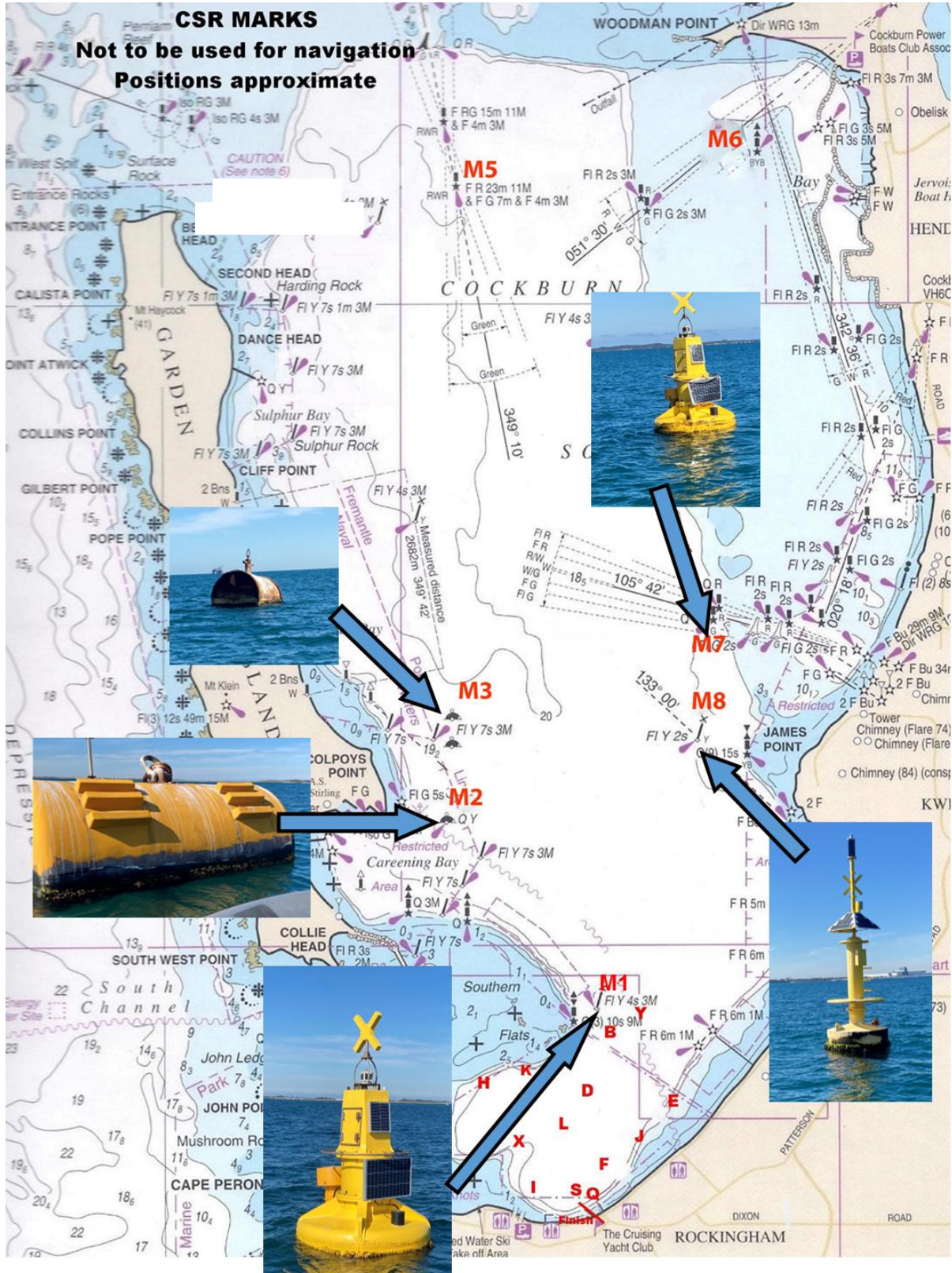
Windward/Leeward Races			
Course:	Flag Name:	Course Flag:	Course: (W1 & L2 to Port)
4	Int.4		W1, L2, W1, Finish.
5	Int.5		W1, L2, W1, L2, W1, Finish.

Mark W1 will be approximately 0.6 to 1.5 NM to windward of the start/finish line.
Mark L2 will be approximately 100m to leeward of the start/finish line.



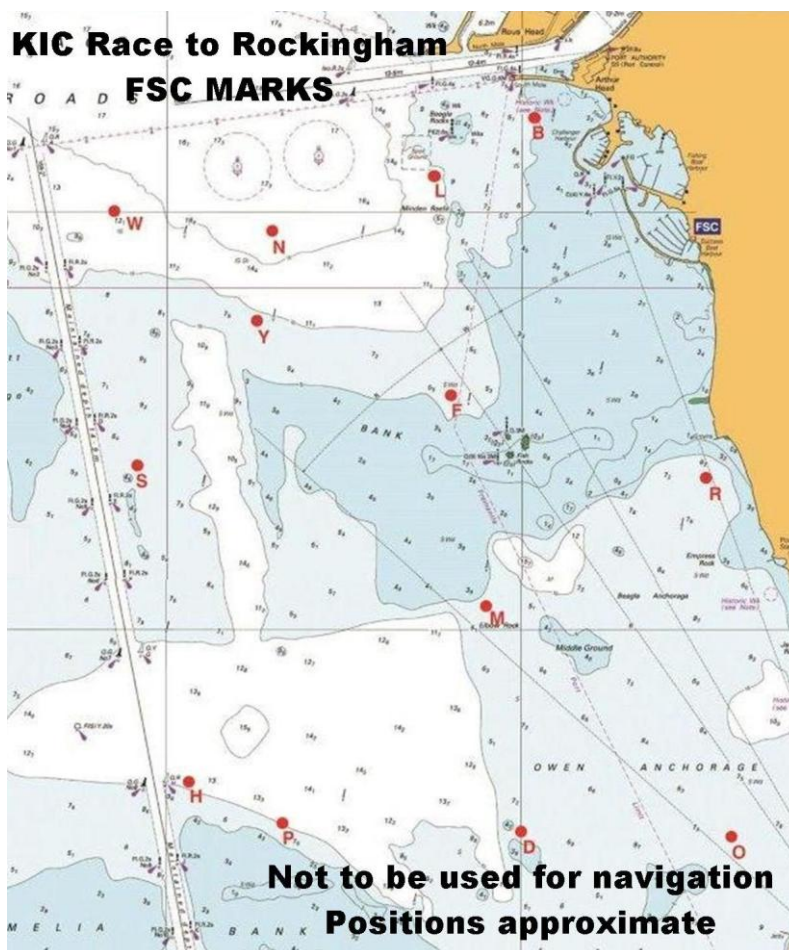
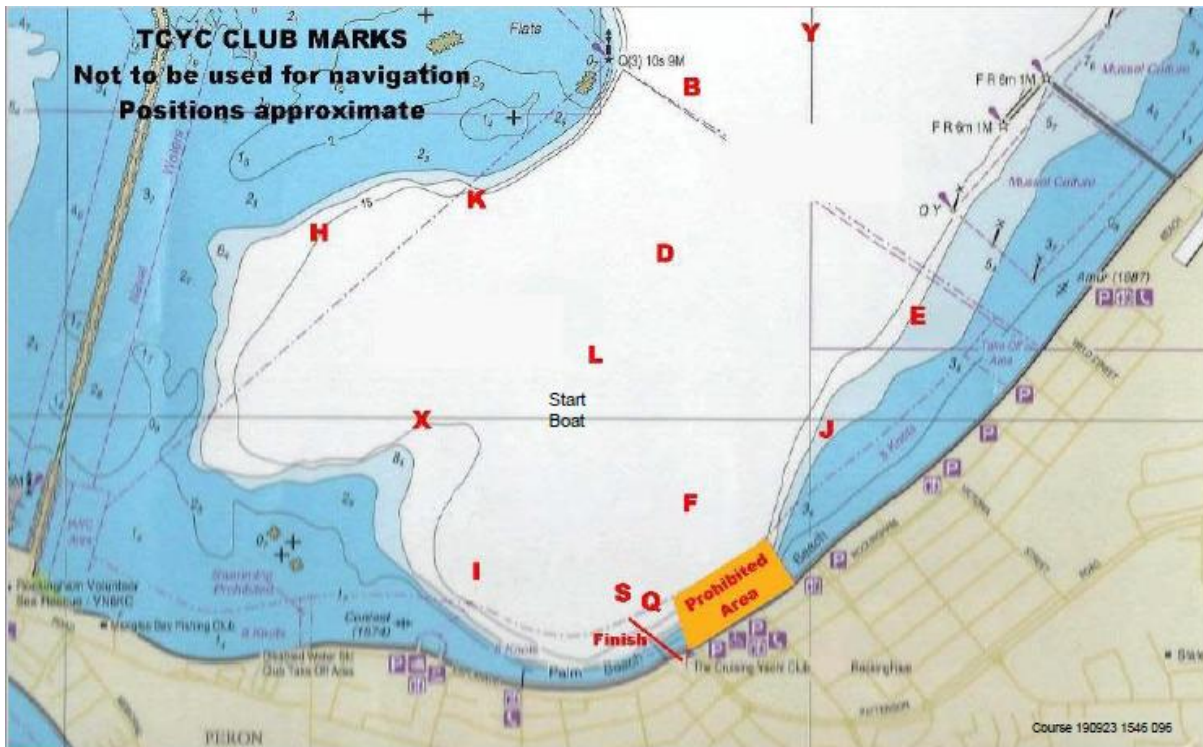


Attachment C - Racing Areas





The Cruising Yacht Club of Western Australia
68th Cockburn Sound Regatta





Attachment D – Mark Coordinates

Approximate Mark Coordinates			
Mark:	Name:	Latitude:	Longitude:
DB	Day Buoy	n/a	n/a
B	“B” Mark	32° 15.247’S	115° 43.742’E
D	“D” Mark	32° 15.587’S	115° 43.629’E
E	“E” Mark	32° 15.838’S	115° 44.261’E
F	“F” Mark	32° 16.211’S	115° 43.757’E
H	“H” Mark	32° 15.676’S	115° 42.660’E
I	“I” Mark	32° 16.321’S	115° 43.070’E
J	“J” Mark	32° 16.067’S	115° 44.045’E
K	“K” Mark	32° 15.536’S	115° 43.096’E
L	“L” Mark	32° 15.828’S	115° 43.448’E
Q	“Q” Mark	32° 16.410’S	115° 43.597’E
S	“S” Mark	32° 16.380’S	115° 43.550’E
X	“X” Mark	32° 15.818’S	115° 43.160’E
Y	“Y” Mark	32° 15.125’S	115° 43.955’E
FIN	“Finish” Mark	32° 16.460’S	115° 43.550’E
M1		32° 15.040’S	115° 43.690’E
M2	South Naval Mooring (yellow) (Formally C4)	32° 13.730’S	115° 42.390’E
M3		32° 12.960’S	115° 42.430’E
M5	South Transit Beacon (rear)	32° 09.160’S	115° 42.480’E
M6	Jervoise Bay North Cardinal Mark	32° 08.900’S	115° 45.000’E
M7		32° 11.950’S	115° 44.470’E
M8	James Point Outer Buoy	32° 13.130’S	115° 44.510’E



The Cruising Yacht Club of Western Australia
68th Cockburn Sound Regatta



Attachment E Finish Line / Obstructions / Prohibited Areas



Note: **Vessel entering the Prohibited Area**
A Marine Officer from the Department of Transport may apply an on-the-spot penalty of \$200 to the alleged offender or a larger penalty of \$500 can be applied to an offender if convicted in a Magistrates court.



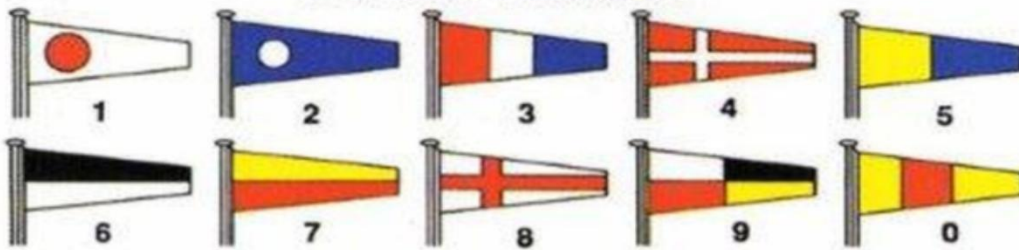
The Cruising Yacht Club of Western Australia
68th Cockburn Sound Regatta



INTERNATIONAL CODE FLAGS



NUMERAL PENDANTS



SUBSTITUTES



NAVAL NUMERAL FLAGS

